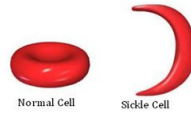


Sickle Cell Anemia



Alleles

A= Normal Hemoglobin  
 S= mutated hemoglobin

Genotypes

Phenotypes

AA

Normal RBCs  
 can get malaria

sickle cell trait  
 AS

Both normal + sickle RBCs

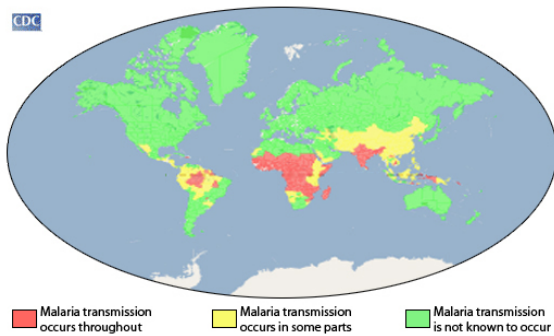
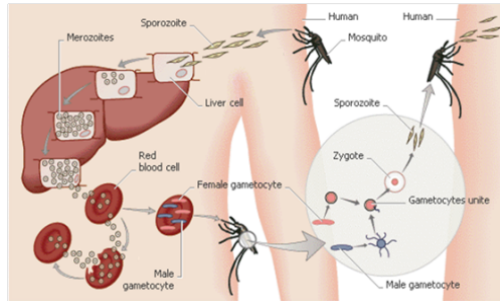
codominant

most advantageous genotype:  
 No sickle cell anemia + immune to malaria

sickle cell anemia  
 SS

Sickle RBCs  
 immune to malaria

Malaria: disease caused by a parasite that is transmitted through mosquitos.



Cross a man who has sickle cell anemia with a woman who has normal red blood cells.